

# COLOURS & MATERIALS

KOLEKSIYON





# FABRICS

COLOURS & MATERIALS | Graded-in Fabric





# FABRIC A



Task Seating



Lounge Seating

## Fabric A Casa

Brand:  
Aypa



Composition: 100% PES

Weight: 300 gr / m<sup>2</sup> (+ / -%5)

Width: 141 cm +-2 cm

Abrasion Resistance: 50.000 Martindale(EN ISO 12947-1,2)

Pilling: 4-5 (EN ISO 12945-2 (2.000 T)

Light Fastness: 4-5 (EN ISO 105 -B02)

Fastness to Rubbing: (EN ISO 105-X12)

Wet: 3-4

Dry: 4

Maintenance: Excess dirt should be removed immediately with a dry cloth.

Simple stains should be dabbed with distilled water and a cotton cloth.



Task Seating



Lounge Seating

## Fabric A FK028

Brand:

Mega Tekstil



10000013960, FK028, COL 92



10000013959, FK028, COL 52



10000013963, FK028, COL 13



10000013968, FK028, COL 25



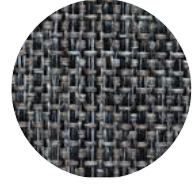
10000013958, FK028, COL 60



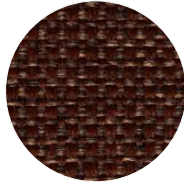
10000013966, FK028, COL 86



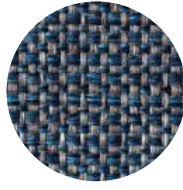
10000013962, FK028, COL 07



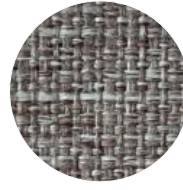
10000013965, FK028, COL 18



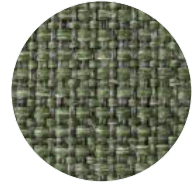
10000013957, FK028, COL 66



10000013961, FK028, COL 83



10000013964, FK028, COL 15



10000013967, FK028, COL 41



10000013956, FK028, COL 69

Composition: 100% PES

Weight: 430 gr / mtul

Width: 140 cm

Abrasion Resistance: 50.000 Martindale (EN ISO 12947-1,2)

Pilling: 5 (EN ISO 12945-2 (2.000 T))

Light Fastness: -

Fastness to Rubbing: -

Seam Opening: EN ISO 13936-2(180N):

WARP: 2,0 mm

EN ISO 13936-2(180N): WEFT: 3,50 mm

Maintenance: Excess dirt should be removed immediately with a dry cloth.

Simple stains should be dabbed with distilled water and a cotton cloth.



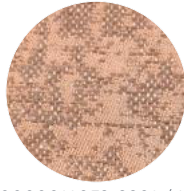
Lounge Seating

## Fabric A Üge

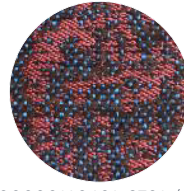
Brand:  
Nouvo Tekstil



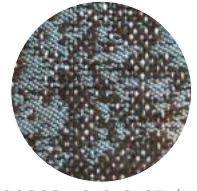
10000014058, 9902 / K5



10000014059, 9901 / K5



100000140601, 9701 / K5



10000014062, 9603 / K5

Composition: 58% Polyester 42% Chenile

Weight: 490 gr / mtul

Width: 140 cm

Abrasion Resistance: 40.000 Martindale(EN  
ISO 12947-1,2)

Pilling: 4-5 (EN ISO 12945-2 (2.000 T)

Light Fastness: -

Fastness to Rubbing: -

Maintenance: Excess dirt should be removed  
immediately with a dry cloth.

Simple stains should be dabbed with  
distilled water and a cotton cloth.



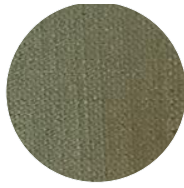
Lounge Seating

## Fabric A Berceste

Brand:  
Mega Tekstil



10000013969, COL 32



10000013970, COL 35



10000013971, COL 24



10000013972, COL 05



10000013988, COL 04

Composition: 100% PES

Weight: 500g/m2

Width: 140 cm

Abrasion Resistance: 55.000 Martindale (EN  
ISO 12945-2 2.000 T)

Pilling: 4

Light Fastness: -

Fastness to Rubbing: -

Maintenance: Excess dirt should be removed  
immediately with a dry cloth.

Simple stains should be dabbed with  
distilled water and a cotton cloth.





Task Seating



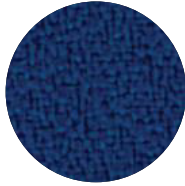
Lounge Seating



Panels

## Fabric A Crepe

Brand:  
Plasmen Tekstil



CR 110



CR 180



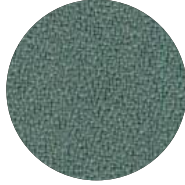
CR 170



CR 160



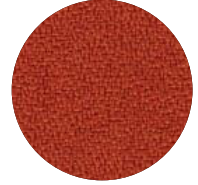
CR 230



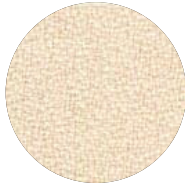
CR 240



CR 060



CR 050



CR 010



CR 090



CR 200

Composition: 100% Polyester

Weight: (+/-% 8) 310 gr / m<sup>2</sup>

Width: 140 cm ±5 cm

Abrasion Resistance: 100.000

Pilling: 4

Light Fastness: -

Fastness to Rubbing: Wet: 4-5, Dry: 4-5

Maintenance: Wipe clean with a damp cloth.

Colour Matching: Batch to batch variations in shade may occur within commercial tolerances.

# FABRIC B



Lounge Seating

## Fabric B Iris

Brand:  
Erol Turkun



10000013575, COL 43



10000013574, COL 44



10000013572, COL 42



10000013618, COL 29



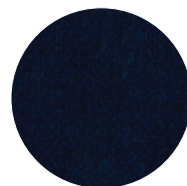
10000013576, COL 40



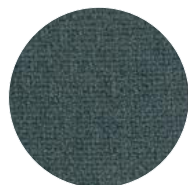
10000013571, COL 18



10000013579, COL 09



10000013580, COL 06



10000013578, COL 12



10000013577, COL 11



10000013573, COL 37



10000013581, COL 45

Composition: 100% PES

Weight: 610g/m<sup>2</sup>

Width: 140 cm

Abrasion Resistance: 60.000

Pilling: 4/5

Light Fastness: 4/5

Maintenance: Wipe clean with a damp cloth.



Task Seating



Lounge Seating



Panels



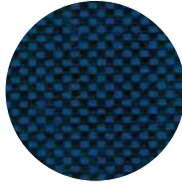
Cigarette & Match

## Fabric B Valor

Brand:  
Plasmen Tekstil



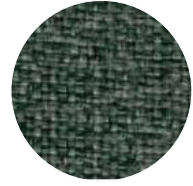
10000013645, 270



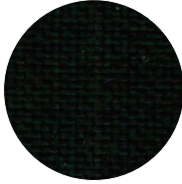
10000013639, 130



10000013646, 350



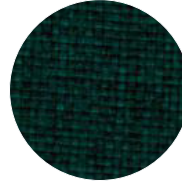
10000013653, 080



10000013652, 070



10000013644, 420



10000013647, 360



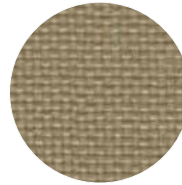
10000013650, 040



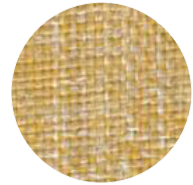
10000013651, 050



10000013642, 380



10000013641, 230



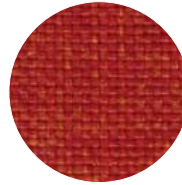
10000013643, 410



10000013649, 030



10000013648, 010



10000013640, 190

Composition: 100% Polyolefin

Weight: (+/- % 5) 297 gr / m<sup>2</sup>

Width: 140 cm -160cm

Abrasion Resistance: 42.000

Pilling: 4

Flammability: BS EN 1021-1: (Cigarette)  
(CMHR 35)

BS EN 1021-2: (Match) (CMHR 35)

Light Fastness: -

Fastness to Rubbing: Wet: 4-5, Dry: 4-5

Maintenance: Wipe clean with a damp  
cloth.

Colour Matching: Batch to batch variations  
in shade may occur within commercial  
tolerances.



Task Seating



Lounge Seating



Panels



10 Year Guarantee



Bleach Cleanable



Washable 60°C



Medium Hazard  
(with treatment)

## Fabric B Era

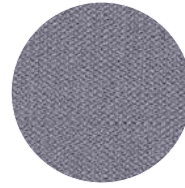
Brand:  
Camira



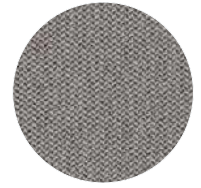
10000012822, CSE14



10000012821, CSE13



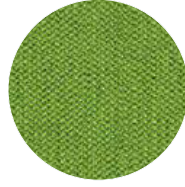
10000012438, CSE11



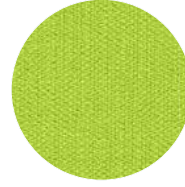
10000012849, CSE02



10000012848, CSE01



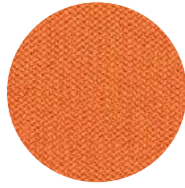
10000012433, CSE16



10000012442, CSE07



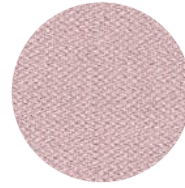
10000012432, CSE03



10000012431, CSE05



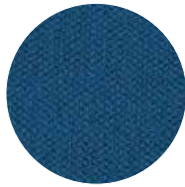
10000012429, CSE06



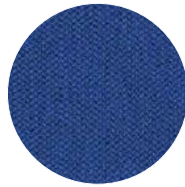
10000012850, CSE19



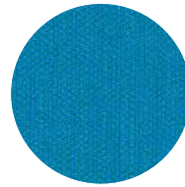
10000012430, CSE17



10000012441, CSE15



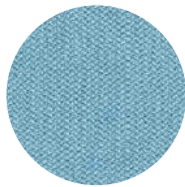
10000012437, CSE12



10000012435, CSE10



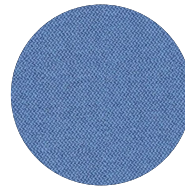
10000012851, CSE09



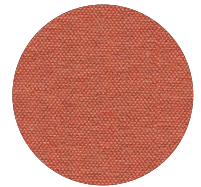
10000012436, CSE20



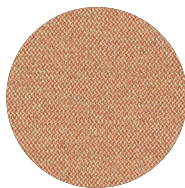
10000012693, CSE21



10000012434, CSE08



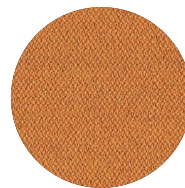
10000013720, CSE26



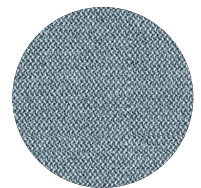
10000013721, CSE25



10000013723, CSE34



10000013872, CSE 27



10000013934, CSE43

---

## Fabric B Era

---

Brand:  
Camira



10000013935, CSE 24



10000013936, CSE 36



10000014413, CSE 33



10000014414, CSE 35



10000014416, CSE 42

---

**Composition:** 100% Polyester

**Width:** 140 cm minimum

**Weight:** 320 g/m<sup>2</sup> ±5% (448 g/lin.m ±5%)

**Abrasion Resistance:** Heavy duty / 10 year guarantee, Independently certified to ≥100,000 Martindale cycles

**Flammability:** EN 1021 - 1 (cigarette), EN 1021 - 2 (match) BS 7176 Low Hazard, EN 13501-1 Adhered Class B, s1, d0, EN 13501-1 Un-adhered Class C, s1, d0

**Light Fastness:** 5 (ISO 105 - B02)

**Fastness to Rubbing:** Wet: 4, Dry: 4 (ISO 105 - X12)

**Bleach Cleanable:** ISO 105 E03 colour change 4 for dilution factor 1:4 chlorine solution

**Maintenance:** Vacuum regularly. Wipe with a damp cloth using soap and water or use proprietary upholstery shampoo. For deeper cleaning use steam, bleach, alcohol or professionally dry clean. Can be washed at 60°C.

**Environment:** Certified to OEKO-TEX® Standard 100, Certified to Indoor Advantage™ Gold Non metallic dyestuffs

# FABRIC C



Lounge Seating

## Fabric C Antares

Brand:  
Penelope



10000010931, 32732



10000010935, 32811



10000010930, 32740



10000010932, 32720



10000010933, 32790



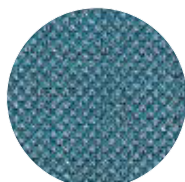
10000010934, 32800



10000012706, 48110



10000012707, 48120



10000012708, 48130

Composition: 27% Cotton, 36% Acrylic,  
37% Polyester

Weight: 558.64 g/m<sup>2</sup>

Width: 140 cm

Abrasion Resistance: 30.000

Light Fastness: 5

Pilling: 5

Fastness to Rubbing: 4-5

Maintenance: Dry cleaning is recommended.

Colour Matching: Within international  
tolerance limits.



Task Seating



Lounge Seating



Panels



10 Year Guarantee



Bleach Cleanable



Washable 60°C



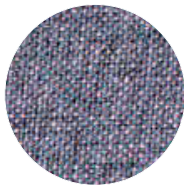
Medium Hazard (with treatment)



Environmental

## Fabric C Rivet

Brand:  
Camira



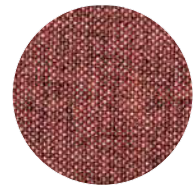
EGL08



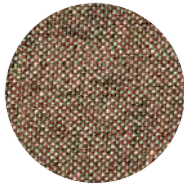
EGL33



EGL32



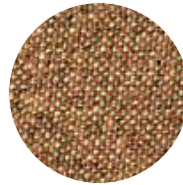
EGL12



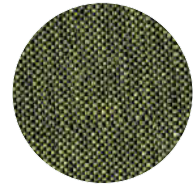
EGL13



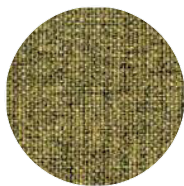
EGL09



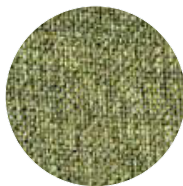
EGL14



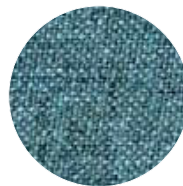
EGL31



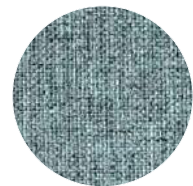
EGL10



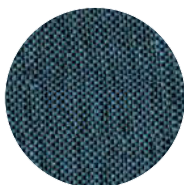
EGL07



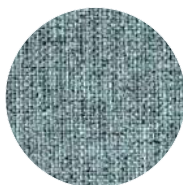
EGL23



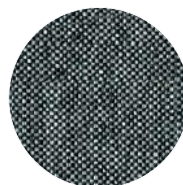
EGL24



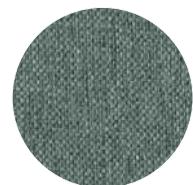
EGL35



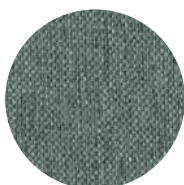
EGL16



EGL50



EGL26



EGL37

**Composition:** 100% Repreve Recycled Polyester

**Weight:** 280g/m2 ±5%

**Width:** 140cm

**Abrasion Resistance:** 80.000

**Flammability:** EN 1021 - 1 (cigarette),

EN 1021 - 2 (match),

BS 7176 Low Hazard,

UNI 9175 Classe 1 IM

**Fastness to Rubbing:** Wet: 4, Dry: 4 (ISO 105 -X12)

**Light Fastness:** 6

**Bleach Cleanable:** ISO 105 E03 colour change 4 for dilution factor 1:4 chlorine solution.

**Maintenance:** Vacuum regularly. Wipe with a damp cloth using soap and water or use proprietary upholstery shampoo. For deeper cleaning use steam, bleach, alcohol or professionally dry clean. Can be washed at 60°C. Full details can be found in our cleaning and disinfection guide.

**ColourMatching:** -

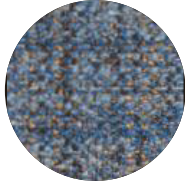
**Environment:** Certified to the EU, Ecolabel Certified to Indoor Advantage Gold, Made from 100% post-consumer recycled polyester.



Lounge Seating

### Fabric C Pierre

Brand:  
Penelope



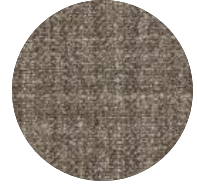
10000012758, 39123



10000012243, 39125



10000012245, 38368



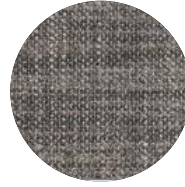
10000012247, 38394



10000012244, 38360



10000012246, 38393



10000012248, 39130



10000012247, 38394

Composition: 26% Cotton, 2% Flax,  
46% Polyacrylic, 26% Polyester

Weight: 510.42 g/m<sup>2</sup>

Width: 140 cm

Abrasion Resistance: 4 2.600

Flammability: BS5852 Part1

1979: Cigarette

Light Fastness: 4-5

Pilling: 4-5

Fastness to Rubbing: 4-5

Maintenance: Dry cleaning is recommended.

Colour Matching: Within international  
tolerance limits.



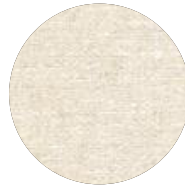
Lounge Seating

### Fabric C Barrel

Brand:  
Penelope



10000013694, 12



10000013564, 01



10000013565, 03



10000013693, 11

Composition: 53% VI, 28% PES, 13% CO, 6% LI

Weight: 815g/m<sup>2</sup> ±5%

Width: 146cm

Abrasion Resistance: 24.000

Light Fastness: 4

Fastness to Rubbing: 4

Maintenance: Wipe clean with a damp  
cloth.





Task Seating



Lounge Seating



Panels



Cigarette &  
Match

## Fabric C Furnilana

Brand:  
Özlem Tekstil



10000013387, MD30420A



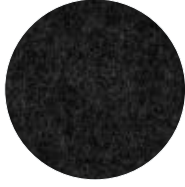
10000013678, MD30421D



10000013679, MD20211A



10000013390, MD50719F



10000013381, ANTRACIDE



10000013392, MD30436H



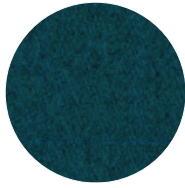
10000013391, MD40138B



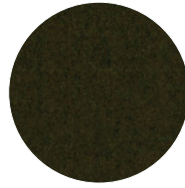
10000013627, MD70410E



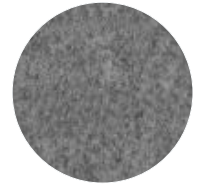
10000013680, MD117446



10000013389, MD60400A



10000013614, MD60421A



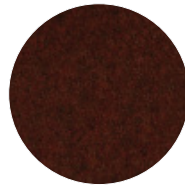
10000013626, GREY



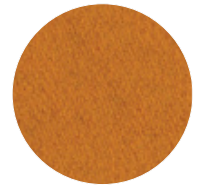
10000013611, 50558A



10000013383, MD10677A



10000013386, MD20205A



10000013681, 20210A



10000013373, 90423A



10000013385, MD20214A



10000013682, 90426A

Composition: 80% Virgin wool,  
20% polyamide. Non metallic dye stuff

Weight: -

Width: 140 cm

Abrasion Resistance: 50.000 martindale  
(ISO 12947-2:1998)

Pilling: 4/5 (ISO 12945:2:2000)

Flammability: BS EN 1021-1:2006 (Cigarette)  
BS EN 1021-2:2006 (Match)

Light Fastness: 5 (BS EN ISO B02:1999)

Fastness to Rubbing: Dry:4/5 (BS EN ISO 105  
x 12:2002)

Wet:4/5 (BS EN ISO 105 x 12:2002)

Maintenance: Vacuum regularly. Professionally  
dry clean or wipe clean with a damp cloth.



Task Seating



Lounge Seating



Panels



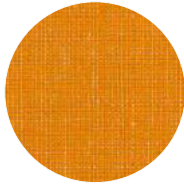
10 Year Guarantee



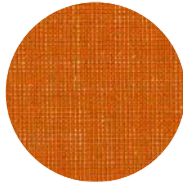
Environmental

## Fabric C Patina

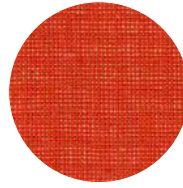
Brand:  
Camira



10000012784, PAT25



10000012783, PAT26



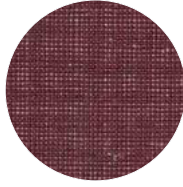
10000012879, PAT15



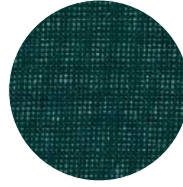
10000012887, PAT27



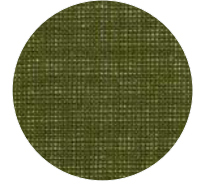
10000012888, PAT36



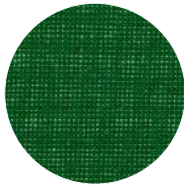
10000012785, PAT42



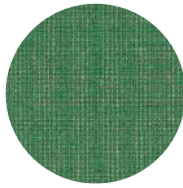
10000012885, PAT05



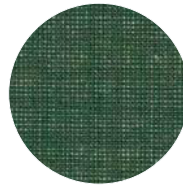
10000012888, PAT37



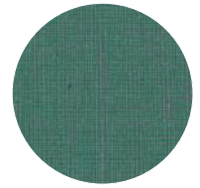
10000012881, PAT38



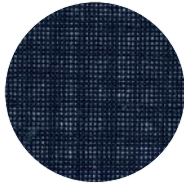
10000012882, PAT28



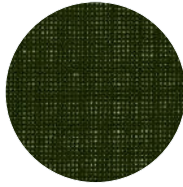
10000012883, PAT41



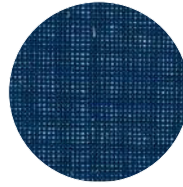
10000012884, PAT32



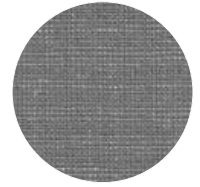
10000012886, PAT19



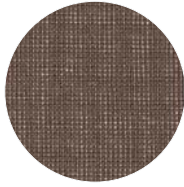
10000012891, PAT07



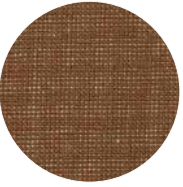
10000012892, PAT17



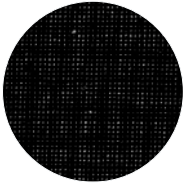
10000012828, PAT34



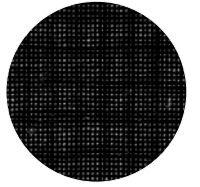
10000012889, PAT30



10000012890, PAT10



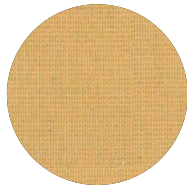
10000012830, PAT20



10000012829, PAT35

## Fabric C Patina

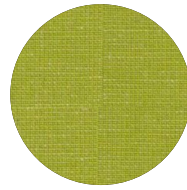
Brand:  
Camira



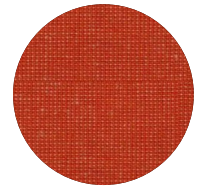
10000014417, PAT16



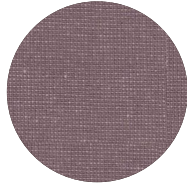
10000014418, PAT02



10000014419, PAT39



10000014423, PAT09



10000014424, PAT43

**Composition:** 69% Wool, 18.5% Flax,  
8% Polyamide, 4.5% Viscose

**Weight:** 330g/m2 ±5%

**Width:** 140 cm

**Abrasion Resistance:** 100.000

**Pilling:** Wet: 4, Dry: 4 (ISO 105 -X12)

**Flammability:** EN 1021 -1 Cigarette

EN 1021 -2 Match

BS 7176 LowHazard

BS 5852 Ignition Source 5

BS 7176 Medium Hazard

BS 5867-2: Type B Curtains& Drapes

UNI 9175 Classe 1 IM

ÖNORM B 3825 & A 3800-1

**Light Fastness:** 5

**Fastness to Rubbing:** Wet: 4, Dry: 4 (ISO 105  
-X12)

**Maintenance:** Vacuum regularly. Wipe with  
a damp cloth using soap and water or use  
proprietary upholstery shampoo. For deeper  
cleaning use steam or professionally dry  
clean. Full details can be found in our  
cleaning and disinfection guide.

**ColourMatching:** -

**Environment:** Certified to the EU Ecolabel,  
Certified to Indoor Advantage™ Gold,  
Contains wool and bast fibre,  
Non metallic dyestuffs



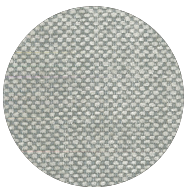
Lounge Seating

## Fabric C Tokio

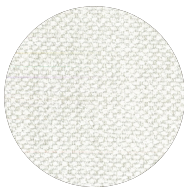
Brand:

Artı Tekstil

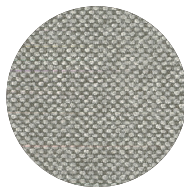
**Composition:**  
59% Polyester,  
%41 Viscose



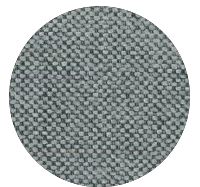
01, 10000013815



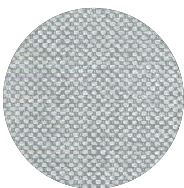
02, 10000013816



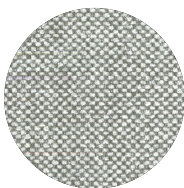
20, 10000013821



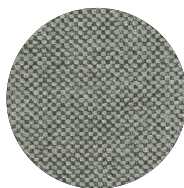
45, 10000013819



121, 10000013817



170, 10000013818



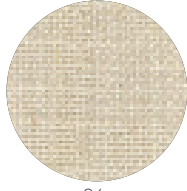
710, 10000013820



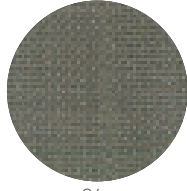
Lounge Seating

## Fabric C Darwin

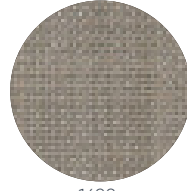
Brand:  
Mario Sirtori



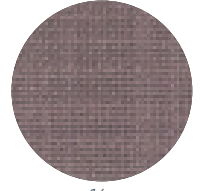
06



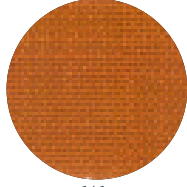
24



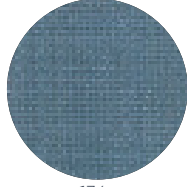
1628



16



141



136

Composition: % 58 VI – 11 LI – 31 CO S  
Weight: (+/-5%) g/m2 567 g/ml 793  
Width: 138/140 cm  
Abrasion Resistance: -  
Light Fastness: -  
Pilling: 3/4  
Maintenance: Wipe clean with a damp cloth.



Lounge Seating

## Fabric C Burumcuk

Brand:  
Mega Tekstil



10000013570, 02



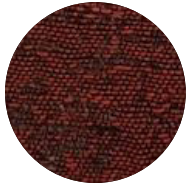
10000013740, 09



10000013739, 10



10000013738, 13



10000013740, 09

Composition: 53% VI, 28% PES, 13% CO, 6% LI  
Weight: 750 +/-2%  
Width: 140cm  
Abrasion Resistance: 20.000  
Light Fastness: 5  
Fastness to Rubbing: 3  
Maintenance: Wipe clean with a damp cloth.



Task Seating



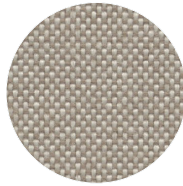
Lounge Seating

## Fabric C Torino

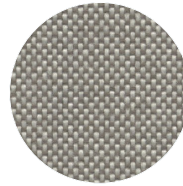
Brand:  
Fidivi



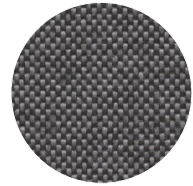
10000014582, 9201



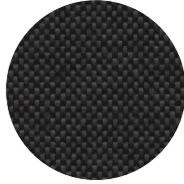
10000014585, 9111



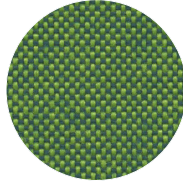
10000014526, 9801



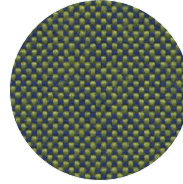
10000014500, 9808



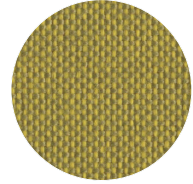
10000014591, 9838



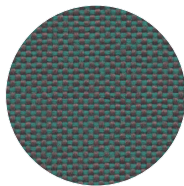
10000014529, 9707



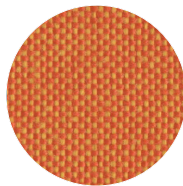
10000014528, 9717



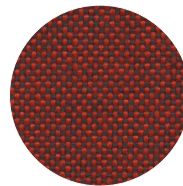
10000014593, 9702



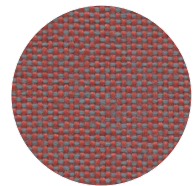
10000014530, 9602



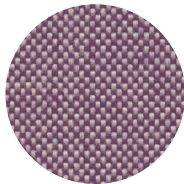
10000014594, 9312



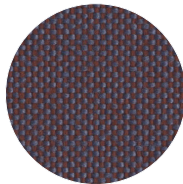
10000014546, 9416



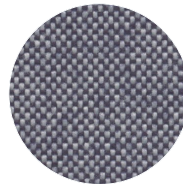
10000014527, 9306



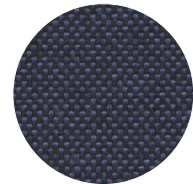
10000014525, 9501



10000014584, 9406



10000014592, 9611



10000014583, 9616

Composition: 100% Polyester Trevira Cs

Weight: ± 5 % 365 g/lm (EN 12127)

Width: ± 2 % 140 cm

Abrasion Resistance: ± 10 % 70.000 martin-  
dale (ISO 12947-2)

Pilling: 5 ( ISO 12945-2)

Flammability: UNI 9174 - 8456 Class C1, UNI  
9175 Class 1 IM, DIN 4102 Class B1, NF 92501-7  
Class M1, NF D 60013 Class AM18

EN 1021-1 & 2, BS Crib 5, BS 7176 Class

Medium Hazard, EN 13773 Class 1, OENORM

3800-1 Class B1,Q1,TR1,

California TB117, USA NFPA 701, USA NFPA 260,

IMO Part 8 Upholstery

Light Fastness: 6 ISO 105-B02 (Xenotest)

Fastness to Rubbing: 4/5 ISO 105-X12

(Crockmeter)

Maintenance: Vacuum regularly. Professionally  
dry clean or wipe clean with a damp cloth.



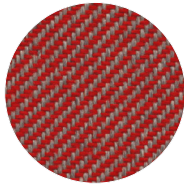
Task Seating



Lounge Seating

## Fabric C Jeans

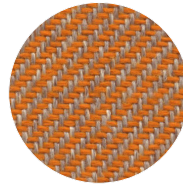
Brand:  
Fidivi



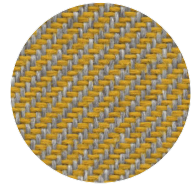
10000014573, 9427



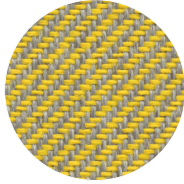
10000014537, 9488



10000014536, 9430



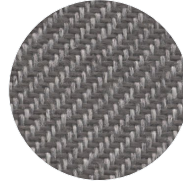
10000014532, 9320



10000014600, 9390



10000014596, 9810



110000014597, 9807



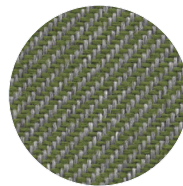
10000014578, 9141



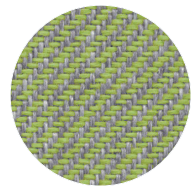
10000014599, 9110



10000014531, 9125



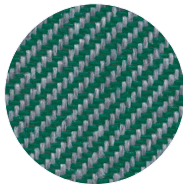
10000014595, 9753



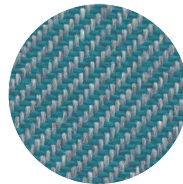
10000014535, 9741



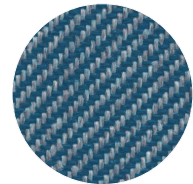
10000014501, 9726



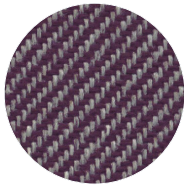
10000014533, 9708



10000014576, 9637



10000014598, 9631



10000014534, 9504

**Composition:** 100% Polyester Trevira Cs

**Weight:** ± 5 % 380 g/m (EN 12127)

**Width:** ± 2 % 140 cm

**Abrasion Resistance:** ± 10 % 75.000  
martindale (ISO 12947-2)

**Pilling:** 4/5 (ISO 12945-2)

**Flammability:** UNI 9174 - 8456 Class C1, UNI  
9175 Class 1 IM, DIN 4102 Class B1, NF 92501-7  
Class M1, NF D 60013 Class AM18 EN 1021-1 &  
2, BS Crib 5, BS 7176 Class Medium Hazard,  
EN 13773 Class 1, OENORM 3800-1 Class  
B1,Q1,TR1, California TB117, USA NFPA 701, USA  
NFPA 260, IMO Part 8 Upholstery

**Light Fastness:** 6 ISO 105-B02 (Xenotest)

**Fastness to Rubbing:** 4/5 ISO 105-X12  
(Crockmeter Wet-Dry)

**Maintenance:** Vacuum regularly. Professionally  
dry clean or wipe clean with a damp cloth.



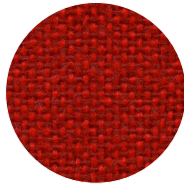
Task Seating



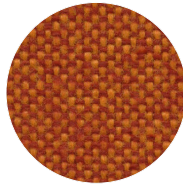
Lounge Seating

## Fabric C Jet

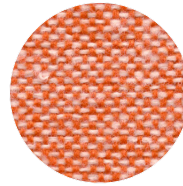
Brand:  
Fidivi



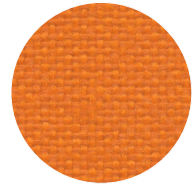
10000014569, 9401



10000014504, 9404



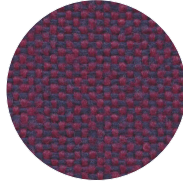
10000014506, 9301



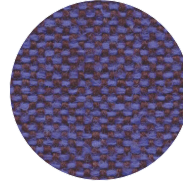
10000014515, 3036



10000014512, 3090



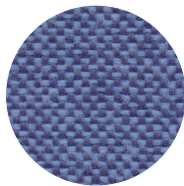
10000014507, 9501



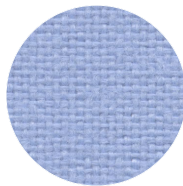
10000014586, 9606



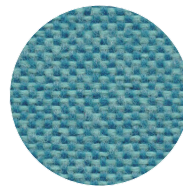
10000014544, 6013



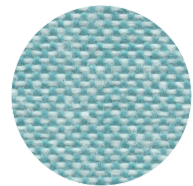
10000014511, 9601



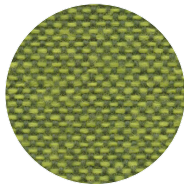
10000014516, 6056



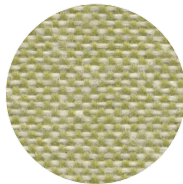
10000014510, 9609



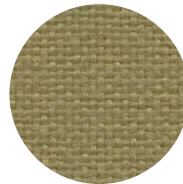
10000014509, 9610



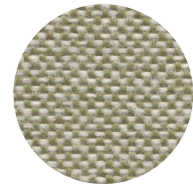
10000014498, 9702



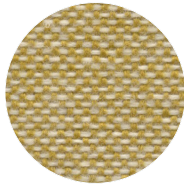
10000014499, 9701



10000014513, 7034



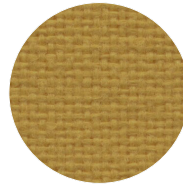
10000014517, 9703



10000014545, 9305



10000014508, 9304



10000014514, 3019

**Composition:** 100% Polyester Trevira Cs

**Weight:** ± 5 % 365 g/lm (EN 12127)

**Width:** ± 2 % 140 cm

**Abrasion Resistance:** ± 10 % 65.000  
martindale (ISO 12947-2)

**Pilling:** 5 ( ISO 12945-2)

**Flammability:** UNI 9174 - 8456 Class C1, UNI  
9175 Class 1 IM, DIN 4102 Class B1, NF 92501-7  
Class M1, NF D 60013 Class AM18

EN 1021-1 & 2, BS Crib 5, BS 7176 Class

Medium Hazard, EN 13773 Class 1, OENORM  
3800-1 Class B1,Q1,TR1,

California TB117, USA NFPA 701, USA NFPA 260,  
IMO Part 8 Upholstery

**Light Fastness:** 6 ISO 105-B02 (Xenotest)

**Fastness to Rubbing:** 4/5 ISO  
105-X12 (Crockmeter)

**Maintenance:** Vacuum regularly. Professionally  
dry clean or wipe clean with a damp cloth.

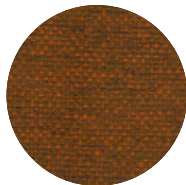
# FABRIC D



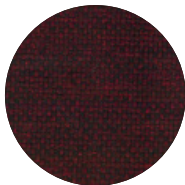
Lounge Seating

## Fabric D Laser J Flash

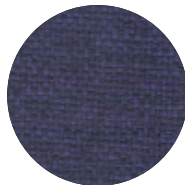
Brand:  
Fidivi



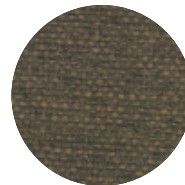
9382



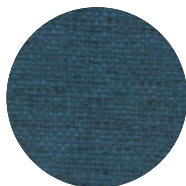
9417



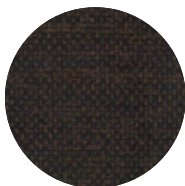
9596



9106



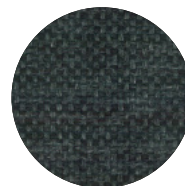
9606



9207



9416



9809

Composition: 100% Polyester Trevira CS  
Weight: 770 g/ml - 550 g/m  
Width: 140 cm  
Pilling: ISO 12945-2: 3/4  
Abrasion Resistance: 150.000  
Light Fastness: 6  
Fastness to Rubbing: 4/5  
Certifications: Oekotex, Euflower-Ecolabel  
Maintenance: Wipe clean with a damp cloth.

Fire Resistance: C1 (UNI 9174 - UNI 8456),  
M1 (NF P 92501-7),  
B1 (DIN 4102),  
AM 18 (NF D 60013),  
CRIB 5 (BS 5852 part II),  
EN 1021-1&2,  
BS 7176,  
IMO for upholstery Part 8,  
California TB 117,  
USA NFPA 701,  
USA NFPA 260,  
ONORM B 3825-Onorm A 3800-1 Class B1-  
Q1-TR1,  
EN 13773,  
1 IM (UNI 9175)



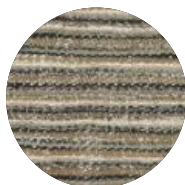
Lounge Seating

## Fabric D Miras

Brand:  
Erol Turkun



10000013568, 54



10000013569, 55



10000013566, 52



10000013567, 53

Composition: 40% CO, 25% VI, 25% PES,  
10% LI  
Weight: 865g/m2 ±2%  
Width: 145cm  
Abrasion Resistance: 24.000  
Light Fastness: 5  
Fastness to Rubbing: 3  
Maintenance: Wipe clean with a damp cloth.





Task Seating



Lounge Seating



Panels



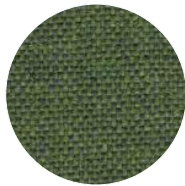
10 Year Guarantee



Environmental

## Fabric D Main Line Flax

Brand:  
Camira



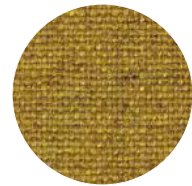
10000012905, MLF18



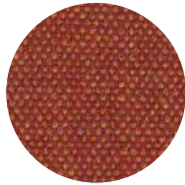
10000012900, MLF23



10000012909, MLF32



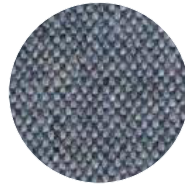
10000012897, MLF17



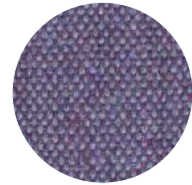
10000012896, MLF13



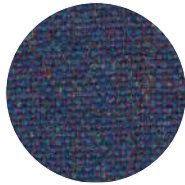
10000012895, MLF01



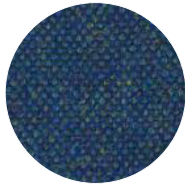
10000012819, MLF22



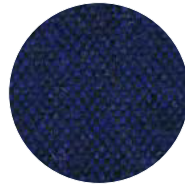
10000012903, MLF27



10000012906, MLF38



10000012907, MLF34



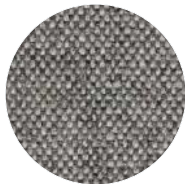
10000012820, MLF19



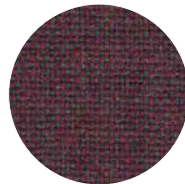
10000012910, MLF36



10000012833, MLF16



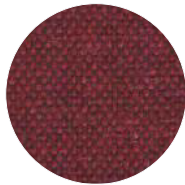
10000012898, MLF02



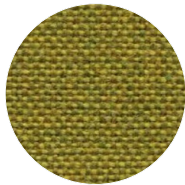
10000012902, MLF41



10000012901, MLF40



10000012899, MLF14



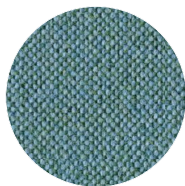
10000013519, MLF31



10000013769, MLF10



10000014401, MLF07



10000014405, MLF25

Composition: 70% Virgin Wool, 30% Flax

Weight: 437 g/m<sup>2</sup>

Width: 140cm

Abrasion Resistance: 50.000

Flammability: EN 1021 - 1 (cigarette),

EN 1021 - 2 (match) BS 7176 Low Hazard,  
BS 5852 Ignition Source 5 BS 7176 Medium  
Hazard,

NF D 60-013,

ÖNORM B 3825 & A 3800-1

(58kg/m<sup>3</sup> CMHR Foam),

UNI 9175 Classe 1 IM

BS 5867-2: Type B Curtains & Drapes,

IMO FTP Code (Part 8),

The Furniture and Furnishing (Fire Safety),

Regulations 1988 (UK domestic cigarette  
and match)

Light Fastness: 5

Fastness to Rubbing: Wet: 3, Dry: 4 (ISO 105  
-X12)

**Maintenance:** Vacuum regularly. Wipe with  
a damp cloth using soap and water or use  
proprietary upholstery shampoo. For deeper  
cleaning use steam or professionally dry clean.  
Full details can be found in our cleaning and  
disinfection guide.

**Colour Matching:** -

**Environment:** Certified to the EU Ecolabel,  
Certified to Indoor Advantage™ Gold,  
Rapidly renewable and compostable,  
Made from wool and bast fibre



Task Seating



Lounge Seating



Panels



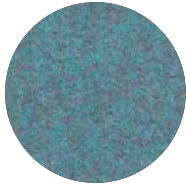
Drapery



10 Year Guarantee

## Fabric D Synergy

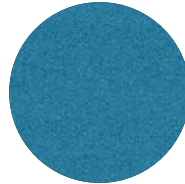
Brand:  
Camira



10000012844, LDS56



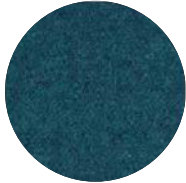
10000012921, LDS55



10000012920, LDS57



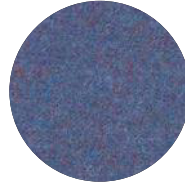
10000012791, LDS62



10000012524, LDS59



10000012919, LDS67



10000012918, LDS64



10000012929, LDS33



10000012795, LDS17



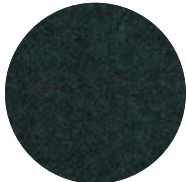
10000012930, LDS32



10000012843, LDS61



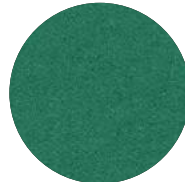
10000012794, LDS50



10000012932, LDS60



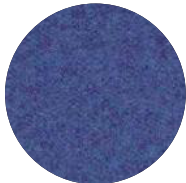
10000012922, LDS51



10000012923, LDS52



10000012924, LDS53



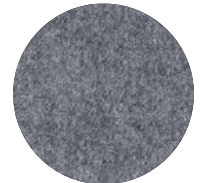
10000012793, LDS68



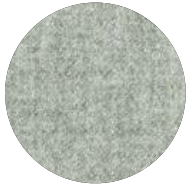
10000012928, LDS48



10000012931, LDS34



10000012796, LDS16



10000012797, LDS08



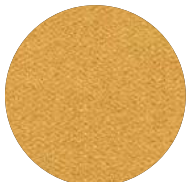
10000012969, LDS27



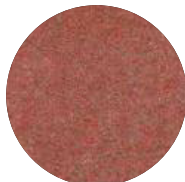
10000012925, LDS46



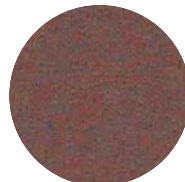
10000012926, LDS28



10000012927, LDS4



10000012912, LDS73



10000012845, LDS76



10000012914, LDS84

## Fabric D Synergy

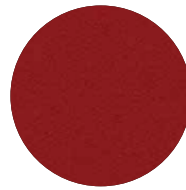
Brand:  
Camira



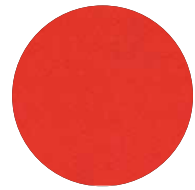
10000012672, LDS42



10000012917, LDS36



10000012915, LDS86



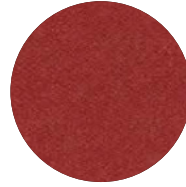
10000012916, LDS80



10000012913, LDS81



10000012823, LDS87



10000012824, LDS85

**Composition:** 95% Virgin Wool, 5% Polyamide  
**Weight:** 400g/m<sup>2</sup> ±5%  
**Width:** 140 cm  
**Abrasion Resistance:** 100.000  
**Pilling:** Wet: 4, Dry: 4 (ISO 105 -X12)  
**Light Fastness:** 5  
**Fastness to Rubbing:** Wet: 4, Dry: 4 (ISO 105 -X12)  
**Maintenance:** Vacuum regularly.  
Professionally dry clean or wipe clean with a damp cloth.  
**Colour Matching:** -  
**Environment:** EU Ecolabel Certified

**Flammability:** EN 1021 -1 Cigarette,  
EN 1021 -2 Match,  
NF D 60-013,  
EN 13501-1 Adhered Class D, s1, d0,  
EN 13501-1 Un-adhered Class E, s2, d0,  
EN 13501-1 Adhered Class B, s1, d0 when FR treated,  
EN 13501-1 Un-adhered Class D, s2, d0 when FR treated,  
BS 5867 : Part 2 : Type B Curtains & Drapes when FR treated,  
BS 7176 Low Hazard,  
UNI 9175 Classe 1 IM,  
ÖNORM B 3825 & A 3800-1,  
BS 7176 Medium Hazard when FR treated,  
BS 5852 Ignition Source 5 when FR treated

# FABRIC E



Task Seating



Lounge Seating

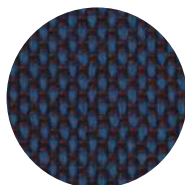


Medium Hazard  
(with treatment)

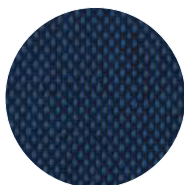
## Fabric E

### Iseo

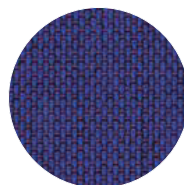
Brand:  
FIDIVI



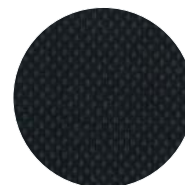
10000013657, 9604



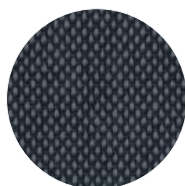
10000013664, 9606



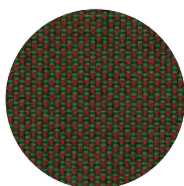
10000013665, 9505



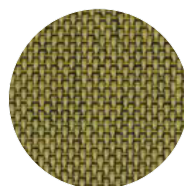
10000013659, 9833



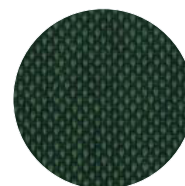
10000013662, 9818



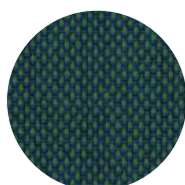
10000013656, 9407



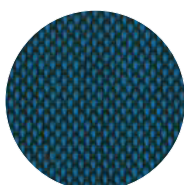
10000013658, 9317



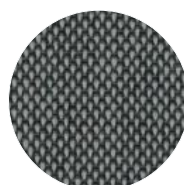
10000013667, 9727



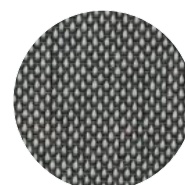
10000013666, 9716



10000013663, 9636



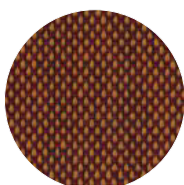
10000013661, 9202



10000013660, 9822



10000013655, 9404



10000013654, 9304

Composition: 100% Polyester

Weight: 490 g / m<sup>2</sup> -685 g/lm

Width: 140cm

Abrasion Resistance: 80.000

Flammability: EN 1021/1-2

NF D 60013 (AM 18)

IMO A 652 (16)

IMO A 471 (12)

BS 7176 Medium Hazard

Light Fastness: 6

Fastness to Rubbing: 4-5

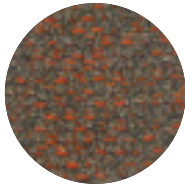
Maintenance: Wipe clean with a damp cloth.



Lounge Seating

## Fabric E Wilde

Brand:  
Mario Sirtori



23/15



31



23/100



01/31

Composition: 1% 36 CO – 26 PC – 16 VI – 10  
PA – 7 WO – 5 LI %

Weight: (+/-5%) g/m2 – 636 g/ml 941

Width: 138/140 cm

Pilling: ISO 12945-2: 3/4

Abrasion Resistance: -

Light Fastness: -

Fastness to Rubbing: EN ISO 105-E01, Wet:

4-5, Dry: 5

Maintenance: Wipe clean with a damp  
cloth.

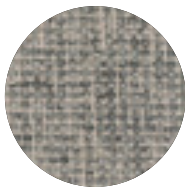
Colour Matching: Batch to batch variations  
in shade may occur within commercial  
tolerances.



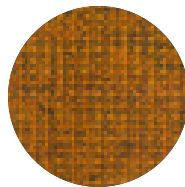
Lounge Seating

## Fabric E Plutone

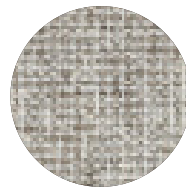
Brand:  
Mario Sirtori



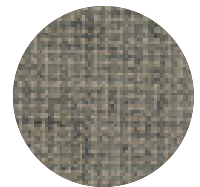
02



30



400



03

Composition: 100% Trevira

Weight: (+/- % 5) (g/m2) 520 – (g/ml) 750

Width: 140 cm – 142cm

Pilling: 5

Abrasion Resistance: 50.000

Light Fastness: -

Fastness to Rubbing: Wet: 5, Dry: 5

Maintenance: Wipe clean with a damp  
cloth.

Colour Matching: Batch to batch variations  
in shade may occur within commercial  
tolerances.



Task Seating



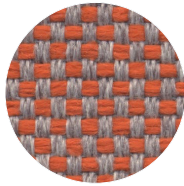
Lounge Seating

## Fabric E Matera

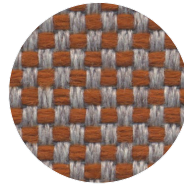
Brand:  
Fidivi



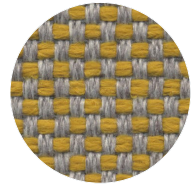
10000014589, 9417



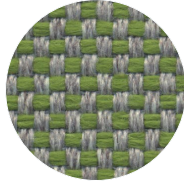
10000014523, 9312



10000014587, 9329



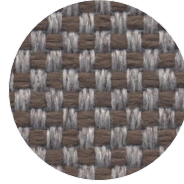
10000014518, 9319



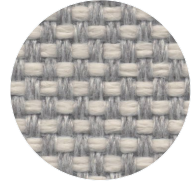
10000014524, 9719



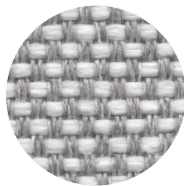
10000014590, 9820



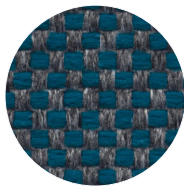
10000014567, 9206



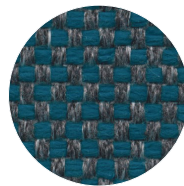
10000014503, 9122



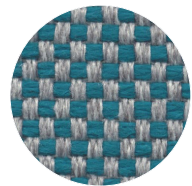
10000014519, 9800



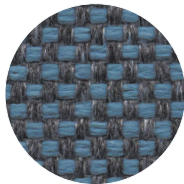
10000014588, 9614



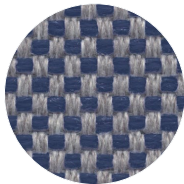
10000014479, 9623



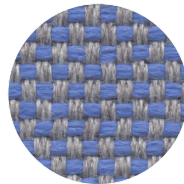
10000014478, 9691



10000014520, 9632



10000014521, 9616



10000014522, 9606



10000014566, 9540

Composition: 100% Polyester Trevira Cs

Weight:  $\pm 5\%$  770 g/lm (EN 12127)

Width:  $\pm 2\%$  140 cm

Abrasion Resistance:  $\pm 10\%$  100.000  
martindale (ISO 12947-2)

Pilling: 5 (ISO 12945-2)

Flammability: UNI 9174 - 8456 Class C1, UNI  
9175 Class 1 IM, DIN 4102 Class B1, NF 92501-7  
Class M1, NF D 60013 Class AM18

EN 1021-1 & 2, BS Crib 5, BS 7176 Class

Medium Hazard, EN 13773 Class 1, OENORM

3800-1 Class B1,Q1,TR1,

California TB117, USA NFPA 701, USA NFPA 260,

IMO Part 8 Upholstery

Light Fastness: 6 ISO 105-B02 (Xenotest)

Fastness to Rubbing: 4/5 ISO 105-X12

(Crockmeter Wet-Dry)

Maintenance: Vacuum regularly. Professionally  
dry clean or wipe clean with a damp cloth.

# FABRIC F



Task Seating



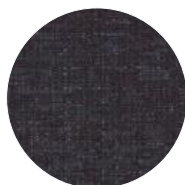
Lounge Seating



Environmental

## Fabric F Memory

Brand:  
KVADRAT



10000012764, 193



10000012001, 176



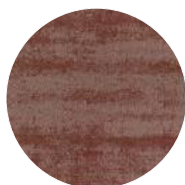
10000012116, 156



10000012767, 473



10000011828, 116



10000012763, 236



10000012766, 143



10000012765, 256



10000012768, 673

Composition: 100% Trevira CS

Weight: Approx.700g/m2

Width: Approx. 150 cm

Abrasion Resistance: 35,000

Martindalecycles

Flammability: EN 1021-1/2

DIN 4102 B1

ÖnormB1/Q1

NF D 60 013

NF P 92 507 M1

UNI 9175 11M UNI 9177 classe 1

US Cal. Tech. Bull. 117

IMO FTP Code 2010:Part 8

No use of brominated flameretardants

Light Fastness: 5-8 (ISO 1-8)

Colour Matching: Slight differences may occur.

Pilling: 4

Fastness to Rubbing: 4

Maintenance: No dryer, no chlorine, clean,  
wash 50 dg care, Ironing Temperature2

Environment: ISO 9001-ISO 14001 Complies  
with REACH regulation,  
Reduced environmental impact



Task Seating



Lounge Seating



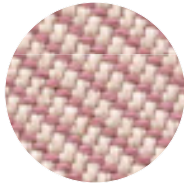
Environmental



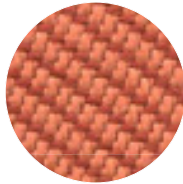
10 Year Guarantee

## Fabric F Oceanic

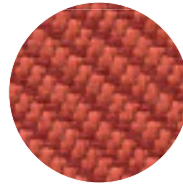
Brand:  
Camira



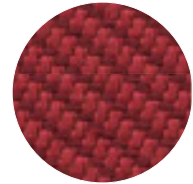
OOC16



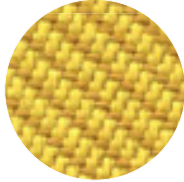
OOC05



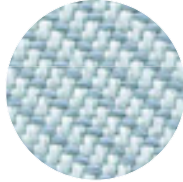
OOC12



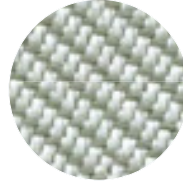
OOC10



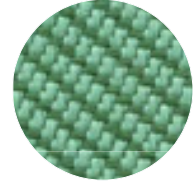
OOC07



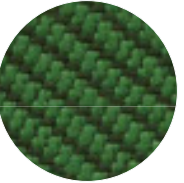
OOC15



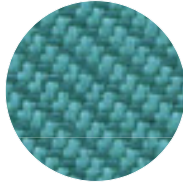
OOC13



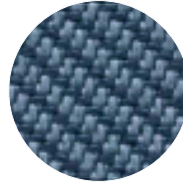
OOC04



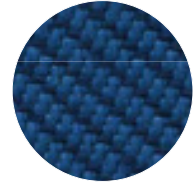
OOC03



OOC02



OOC11



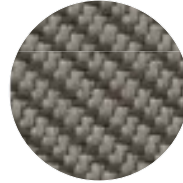
OOC06



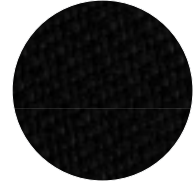
OOC14



OOC09



OOC08



OOC01

**Composition:** 100% post-consumer recycled polyester, including 50% SEQUAL yarn.

**Weight:** 143/4 oz/sq yd ±5% (221/2 oz/running yd ±5%)

**Width:** 54 inches minimum

**Abrasion Resistance:** 100.000

**Flammability:** California Technical Bulletin 117 - 2013,

BS 7176 Low Hazard,

ASTM E84 Class 1 or A (Un-adhered)

**Light Fastness:** 4

**Fastness to Rubbing:** Dry: 4, Wet: 3

**Maintenance:** Water-based cleaning agent or solvent: Depending on the stain, you can use a dry-cleaning solvent, the foam of a mild detergent, or upholstery shampoo.

**Colour Matching:** -

**Environment:** Certified to OEKO-TEX®

Standard 100,

Certified to Indoor Advantage™ Gold,

Made from 100% post-consumer recycled

polyester,

Non metallic dyestuffs





Task Seating



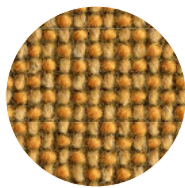
Lounge Seating



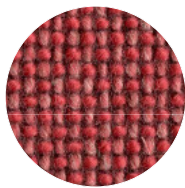
10 Year Guarantee

## Fabric F Craggan Flax

Brand:  
Camira



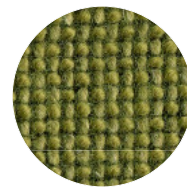
CRA11



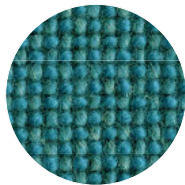
CRA14



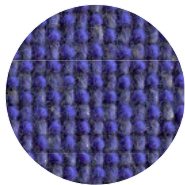
CRA15



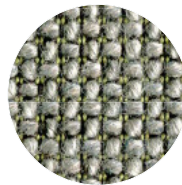
CRA20



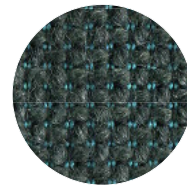
CRA19



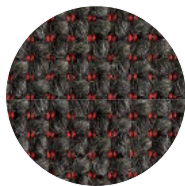
CRA18



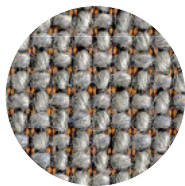
CRA04



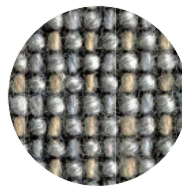
CRA06



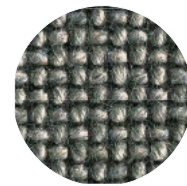
CRA07



CRA03



CRA08



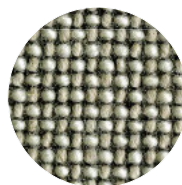
CRA10



CRA12



CRA09



CRA21

Composition: 85% Wool, 10% Flax, 5% Nylon  
Weight: 181/2 oz/sq yd ±5% (28 oz/running yd ±5%)

Width: 54 inches minimum

Abrasion Resistance: 100.000

Flammability: California Technical Bulletin 117 - 2013,

NFPA 260 + UFAC Class 1,  
BS 7176 Medium Hazard

Light Fastness: 4

Fastness to Rubbing: Dry: 4, Wet: 3

Maintenance: Water-based cleaning agent or solvent: Depending on the stain, you can use a dry-cleaning solvent, the foam of a mild detergent, or upholstery shampoo.

Colour Matching: -

Environment: Certified to Indoor Advantage™ Gold,

Contains wool and bast fiber

# FABRIC H



Task Seating



Lounge Seating



Environmental

## Fabric H Coda 2

Brand:  
KVADRAT



442



632



610



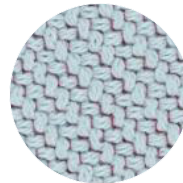
222



642



962



722



232



182



762

Composition: 90% Wool; 10% Nylon

Weight: 860 g/lin.m

Width: 140 cm

Abrasion Resistance: 100.000

Martindale cycles

Flammability: EN 1021-1/2,

BS 5852 part1,

DIN 4102 B2,

ÖnormB2/Q1,

NF D 60 013,

UNI 9175 11M,

US Cal. Bull. 117-2013,

NFPA 260,

IMO FTP Code2010:Part 8 BS 5852 crib5 with

flame retardant treatment,

No use of brominated flame retardants.

Light Fastness: 5-7

Fastness to Rubbing: 4

Pilling: 4

Maintenance: Vacuum regularly. Wipe clean with a damp cloth or shampoo using proprietary upholstery shampoo.

Colour Matching: Minor shade variations may occur.

Environment: Natural fibers Sustainable resource ISO 9001-ISO 14001

Complies with REACH

# GENUINE LEATHER



Task Seating



Lounge Seating



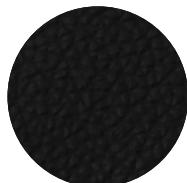
Cigarette & Match

## Genuine Leather

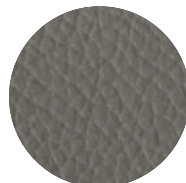
Brand:  
Mastrotto



10000013508, 9028



10000013415, 9024



110000013904, 9033



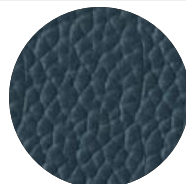
10000013902, 9008



10000013905, 9012



10000013512, 9046



10000013906, 9031



10000013903, 9013

**Composition:** Zenith is a natural leather collection consisting of processed bovine hide of European origin.

**Flesh thickness:** 0,8 –1,00 mm.

**Average hide size:** 3,8 –4,0 m<sup>2</sup>. Complete dyeing.

These high-quality leathers have a semi-dull, waxy surface and a soft touch.

**Flammability:** EN 1021 / 1-2 (cigarette and match)

**Light Fastness:** ISO 105B02 ≥ 5 blue scale

**Fastness to Rubbing:** ISO 11640

CycleValue

Wet250 ≥4

Dry500 ≥4

Transpiration80 ≥4

(ISO 11641 pH8)

**Flexing Endurance:** ISO 5402 > 50.000 cycles

**Colour Matching:** Minor shade variations may occur.

# ARTIFICIAL LEATHER



Task Seating



Lounge Seating

## Artificial Leather

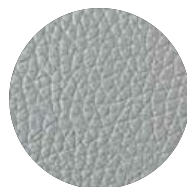
Brand:  
Örteks



10000014023, 61910



10000014022, 622



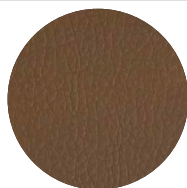
10000014027, 61896



10000014025, 61912



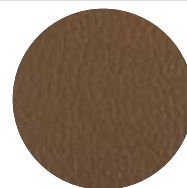
10000014028, 61908



10000014024, 61909



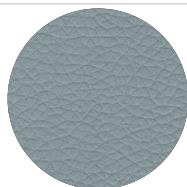
10000014029, 61911



10000014026, 61895



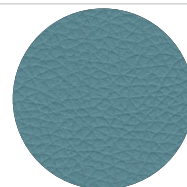
10000014559, 61907



10000014552, 62505



10000014554, 62503



10000014553, 61906



10000014561, 62483



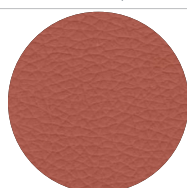
10000014560, 62501



10000014555, 61900



10000014558, 61898



10000014557, 61984



10000014556, 62235

### Composition:

3% PU, 79% PVC, 18% Cotton Polyester

Weight: 674 g/m<sup>2</sup>

Thickness: 140 mm

Tensile strength: (Width) 460%120 / (Length) 420%115 (ISO 1421)

Tear strength: (Width) 45 (Length) minimum 55 (ISO 4674-1)

Flexing endurance:

at 23°C minimum 100.000 flx. (ISO 5402)

Abrasion resistance:

50000 Martindale (ISO 5470-2)

Fastness to rubbing: 5 (ISO 105 - X12)

Light fastness: 5 (ISO 105-B02)

**Maintenance:** Do not use bleach or alcohol for cleaning. Keep away from direct sunlight.

In case of spills such as coffee, tea, etc., wipe clean using a highly absorbent cloth or paper towel. Clean without rubbing. Vacuum or brush using a soft brush for removing surface dust. Applicable for all colors.



Task Seating



Lounge Seating



5 Year Guarantee



Bleach Cleanable



Cigarette & Match



Medium Hazard (with treatment)



Anti Microbial



Stain Repellent



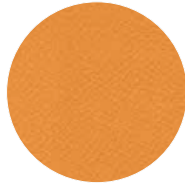
Waterproof



Phthalate Free

## Artificial Leather, Vita

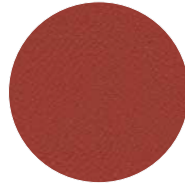
Brand:  
Camira



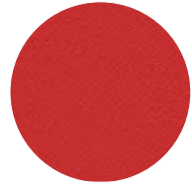
10000012870, ITA03



10000012876, ITA02



10000012869, ITA11



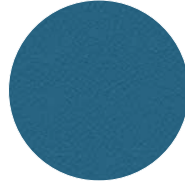
10000012868, ITA08



10000012871, ITA09



10000012872, ITA18



10000012873, ITA19



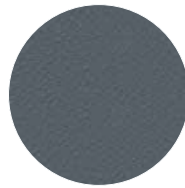
10000012875, ITA20



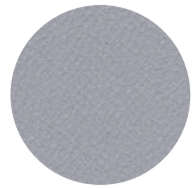
10000012874, ITA15



10000012800, ITA23



10000012799, ITA04



10000012877, ITA01



10000012798, TA07



10000012878, TA10



10000012827, TA14



10000012818, ITA12

### Composition:

Surface: 98.5% PVC, 1.5% PU

Bottom Layer: 50% Polyester, 50% Cotton

Weight: 850g/m<sup>2</sup> ±10%

Width: 140cm

Abrasion Resistance: 100.000

Pilling: Wet: 4, Dry: 4 (BS EN ISO 105 -X12)

Flammability: EN 1021 -1 Cigarette,

EN 1021 -2 Match,

BS 5852 Ignition Source 5,

ECE Regulation No 118.02,

Vita BS 7176 Low Hazard,

Vita BS 7176 Medium Hazard,

Vita FMVSS 302,

Vita ECE Reg. 118 Parts 1 & 2,

Vita FAR 25.853,

Vita NF P 95 503 M2

Light Fastness: 6

Fastness to Rubbing: Wet: 4, Dry: 4 (BS EN ISO 105 -X12)

Maintenance: Wipe with a damp cloth and warm soapy water. Improved resistance to alcohol but avoid regular use and remove residue where possible.

Colour Matching: -

Environment: Anti-microbial/  
Anti-fungal-AATCC 147:2011

# MATERIALS

COLOURS & MATERIALS

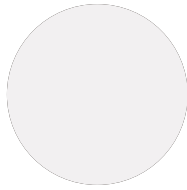




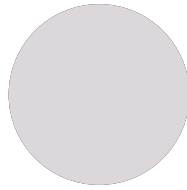
# LAMINATE

---

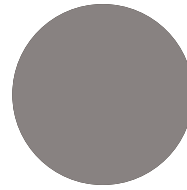
## Laminate



3101



3153



3241



4598 - Real Oak



4599 - Dark Oak

---

# VENEER

---

## Veneer



10371, White Oak



10766, Smoke Oak



13991, Alpi GR012

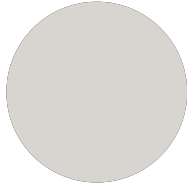
---



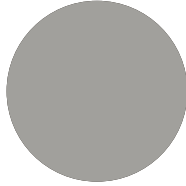
# METAL

---

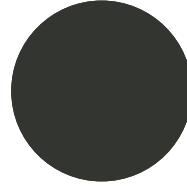
## Epoxy



3101



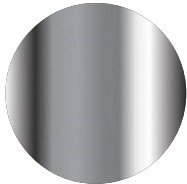
SATIN



RAL7021

---

## Metal



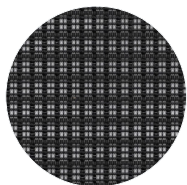
Chrome

---

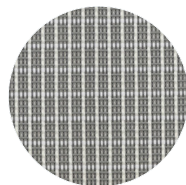
# MESH

---

## Mesh



Black



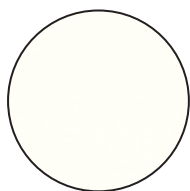
Light Grey

---

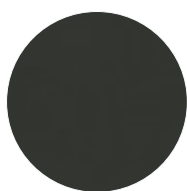
# LACQUERED

---

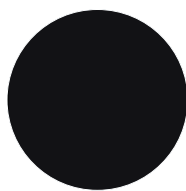
## Lacquered



Matte White



RAL7021



Matte Black

---

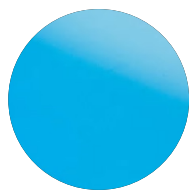
# ACRYLIC

---

## Acrylic



ALGLASS 3110



ALGLASS 2422

---

# MARBLE

---

## Marble



Bruno Perla



Dark Emperador



Carrara White



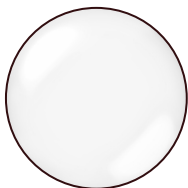
Vega Light

---

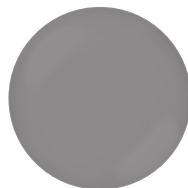
# GLASS

---

## Glass



Clear



Smoked

---

# FABRIC APPLICABILITY CHARTS

## HOME

\*Applicable fabrics are shown in green.



REVISION DATE: 06.12.2021	A				B	C								
	CASA	ÜGE	BERCESTE	FK028	IRIS	BURUMCUK	TOKIO	ANTARES	PIERRE	DARWIN	BARREL	JEANS	JET	
AVA S2														
BABIL SERDIVAN S0														
BABIL SERHAS S0														
REVAN S0														
BALLAD S0														
ALMOND S0														
ALTANA S0														
CAPELLA S0														
DUENDE S0														
EYLİN S0														
HENDEL S1														
ESSAOUIRA S1														
HILARA S0														
GAZEL S0- S1-S2														
MADRIGAL S1														
LAURA S0														
MADRIGAL CHESTER S1														
MILOS S0														
ROMA S0														
MİHRİMAH S2														
OSCAR S0														
VIVA S0														
LALLA S1														
AMOROSO S3														
VIRASANA S4														
DIVAN BABA S1														

REVISION DATE: 06.12.2021	A				B	C								
	CASA	ÜGE	BERCESTE	FK028	IRIS	BURUMCUK	TOKIO	ANTARES	PIERRE	DARWIN	BARREL	JEANS	JET	
SOLE S0														
HALIA (WOODEN LEG) S0														
MIRANDA S2														
HALIA BERGERE & POUF S0														
BALZAC S2 BERJER														
MİHRİMAH S3														
TIGRIDIA S1														
MONTE CRISTO S6														

REVISION DATE: 06.12.2021	A				B	C								
	CASA	ÜGE	BERCESTE	FK028	IRIS	BURUMCUK	TOKIO	ANTARES	PIERRE	DARWIN	BARREL	JEANS	JET	
<b>CHAIRS</b>														
HELEN S0														
ASANDA S2														
PINOCCIO S0														
FABULA S0														

REVISION DATE: 06.12.2021	A				B	C								
	CASA	ÜGE	BERCESTE	FK028	IRIS	BURUMCUK	TOKIO	ANTARES	PIERRE	DARWIN	BARREL	JEANS	JET	
<b>BEDS</b>														
SODADE														
JULIET														
SABA BALIN														
DILA S0 YATAK KAPITONELI					37,43.40.11									
MILIA S0 YATAK KAPITONELI					37,43.40.11									
MILIA S0 YATAK KAPITONESIZ														
MESTRE S1 KAPITONELI					37,43.40.11									
MESTRE S0 KAPITONESIZ														

REVISION DATE: 06.12.2021	A				B	C								
	CASA	ÜGE	BERCESTE	FK028	IRIS	BURUMCUK	TOKIO	ANTARES	PIERRE	DARWIN	BARREL	JEANS	JET	
<b>HOME OFFICE DESK</b>														
MANTA S0 DESK														

REVISION DATE: 06.12.2021	A				B	C								
	CASA	ÜGE	BERCESTE	FK028	IRIS	BURUMCUK	TOKIO	ANTARES	PIERRE	DARWIN	BARREL	JEANS	JET	
<b>COMPLEMENTARIES</b>														
MICKEY S0 POUF														
MICKEY S0 POUF FARBELALI														
MOUSE S0 POUF														
MADRIGAL S1 POUF														
SURI POUF S2														
CUSHIONS (450x300 / 500x500 / 650x300 / 650x450 mm)														

**Note:** Please contact your sales representative for all home furniture's current fabric usage table above. Approval is required.



# FABRIC APPLICABILITY CHARTS

## OFFICE

\*Applicable fabrics are shown in green.





	A		B		C					
	CREPE	FK 028	VALOR (ACCOUSTIC)	ERA	JEANS	JET	TORINO	RIVET	PATINA	FUR
<b>ARMCHAIRS, SOFAS &amp; POUFS</b>										
ANATOLE S0 POUF										
ANATOLE S0 ROTATING C SOFA & ROTATING S SOFA										
BOTERO S2										
REDLAC S0										
CAPELLA S0										
SOLIS S0										
REFAKATCI S1		* Applicable for 10 pieces.		* Applicable for 10 pieces.				* Applicable for 10 pieces.	* Applicable for 10 pieces.	* Applicable for 10 pieces.
DILIM S0										
DILIM S1										
DILIM 02 S0										
HOMER S3										
FLAMINGO S3										
KALIA S0										
HANEDAN S0										
HANOBA S1										
HALIAKOLTUK S0										
IKAROS S0										
LINE S0										
LILIANA S0										
LILIA S0										
MADRIGAL S1										
MADRIGAL CHESTER S1										
MONA S0										
TAMINA S0										
TELLASMAR S2										
TULIP S0										
POEMA S0										
BOCCAPORTO										

	A		B		C					
	CREPE	FK 028	VALOR (ACCOUSTIC)	ERA	JEANS	JET	TORINO	RIVET	PATINA	FUR
<b>OFFICE CHAIRS</b>										
ANATOLE S0 CHAIR										
ANATOLE S0 STOOL										
ANITTA CONFERENCE S0_S1										
ANITTA MANAGER AND VISITOR S1										
ASANDA S2										
CLARUS S0										
DASTAN TASK S1										
DASTAN VISITOR S1										
HALIA BERGERE & POUF S0										
HALIA MANAGER S1										
HALIA TASK S1										
HELEN S0-S1										
MIRANDA S2										
SAVA S0										
TOLA TASK S1										
TRISTAN TASK AND VISITOR S6										
ZENITH (Semi upholstered) S0-S1										

	A		B		C					
	CREPE	FK 028	VALOR (ACCOUSTIC)	ERA	JEANS	JET	TORINO	RIVET	PATINA	FUR
<b>PARTITIONS</b>										
MEGARON S0										
OBLIVION S0										

	A		B		C					
	CREPE	FK 028	VALOR (ACCOUSTIC)	ERA	JEANS	JET	TORINO	RIVET	PATINA	FUR
<b>DESK SYSTEM PANELS</b>										
PI SCREEN										
KOLEKSIYON SCREEN SYSTEM										

	A		B		C					
	CREPE	FK 028	VALOR (ACCOUSTIC)	ERA	JEANS	JET	TORINO	RIVET	PATINA	FUR
<b>WORKING UNITS</b>										
COMPANION S0 TREE										
CAP S0										

**Note:** Please contact your sales representative for the current fabric usage table of all office furniture above. Approval is re



